

# G76x865x2 - 4xM16

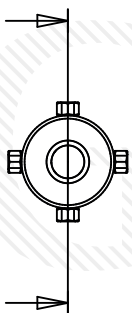
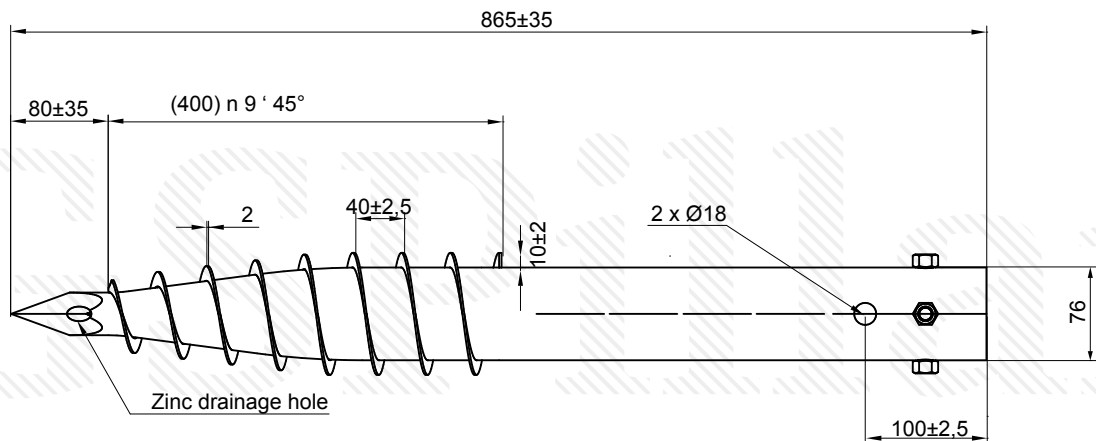
## Technical Data

	OUTER Ø	LENGTH	THICKNESS	THREAD	THREAD HEIGHT	WEIGHT
	mm	mm	mm		mm	kg
G 76x865x2 - 4xM16	76	865	2	4xM16	400	3.8

Hot dip galvanized **DIN EN ISO 1461**

## Load Tests

	MAX load, kN (kg)	MAX tension load, kN (kg)	Shift load, kN (kg)
G 76x865x2 - 4xM16	13 (1326)	6.6 (673)	3.6 (367)



A-A

